



European Commission - DG Environment
Unit B.1: Water, the Marine and Soil



EC Perspective on the WFD and Daughter Directive Groundwater

Andreas SCHEIDLEDER

Umweltbundesamt, Austria

Philippe QUEVAUVILLER

European Commission, DG ENV



Contents of the Presentation

- Objectives of the Water Framework Directive (WFD)
- Key features of the WFD
 - Characterisation
 - Monitoring
 - Programme of measures
- Main orientations of the future Groundwater Directive



WFD objectives

- Prevent further deterioration of aquatic ecosystems
 - Promote sustainable water use based on long-term protection of available water resources
 - Protect and improve the aquatic environment through e.g. specific measures related to discharge reductions or prohibition, and ensure the progressive reduction of groundwater pollution (reversing trends)
 - Contribute to mitigating effects of floods and droughts
 - Long-term objective: achievement of good ecological and chemical status for surface waters **and good quantitative and chemical status for groundwater by the end of 2015**
-



Key features/milestones of the WFD

- **Characterisation** of water bodies, along with analysis of pressures and impacts: **2004**
 - Design of **monitoring** programmes that should be operational by the end of **2006** (river basins)
 - First river basin management plan and design of programme of measures: **2009**
 - **Programme of measures** to be operational by **2012**
-



Characterisation

Initial Characterisation (Annex II)

- **Location and boundaries of GW-bodies**
- **Pressures**
 - Diffuse sources of pollution
 - Point sources of pollution
 - Abstraction
 - Artificial recharge
- **General character of overlying strata**
- **Directly dependent surface water ecosystems or terrestrial ecosystems**



Characterisation

Further Characterisation (Annex II)

- **GW-bodies identified as being at risk in failing good status are to be further characterised**
 - Geological characteristics of the GW-body
 - Hydrogeological units
 - Interactions with soils, surface waters etc.



Groundwater monitoring

- **Design of monitoring programme**
 - surveillance, operational monitoring
 - frequency
 - additional monitoring (e.g. protected areas)
- **Classification of quantitative / chemical status**
 - comparability of results
 - presentation of monitoring results and classification



Programme of measures

- **Measures designed to**
 - protect waters,
 - control abstraction,
 - control point source discharges liable to cause pollution (permit, investigation),
 - prevent and control diffuse sources of pollution (prohibition, permit: based on investigations)
 - **Periodic reviews of authorisations / registrations based on regular monitoring**
-



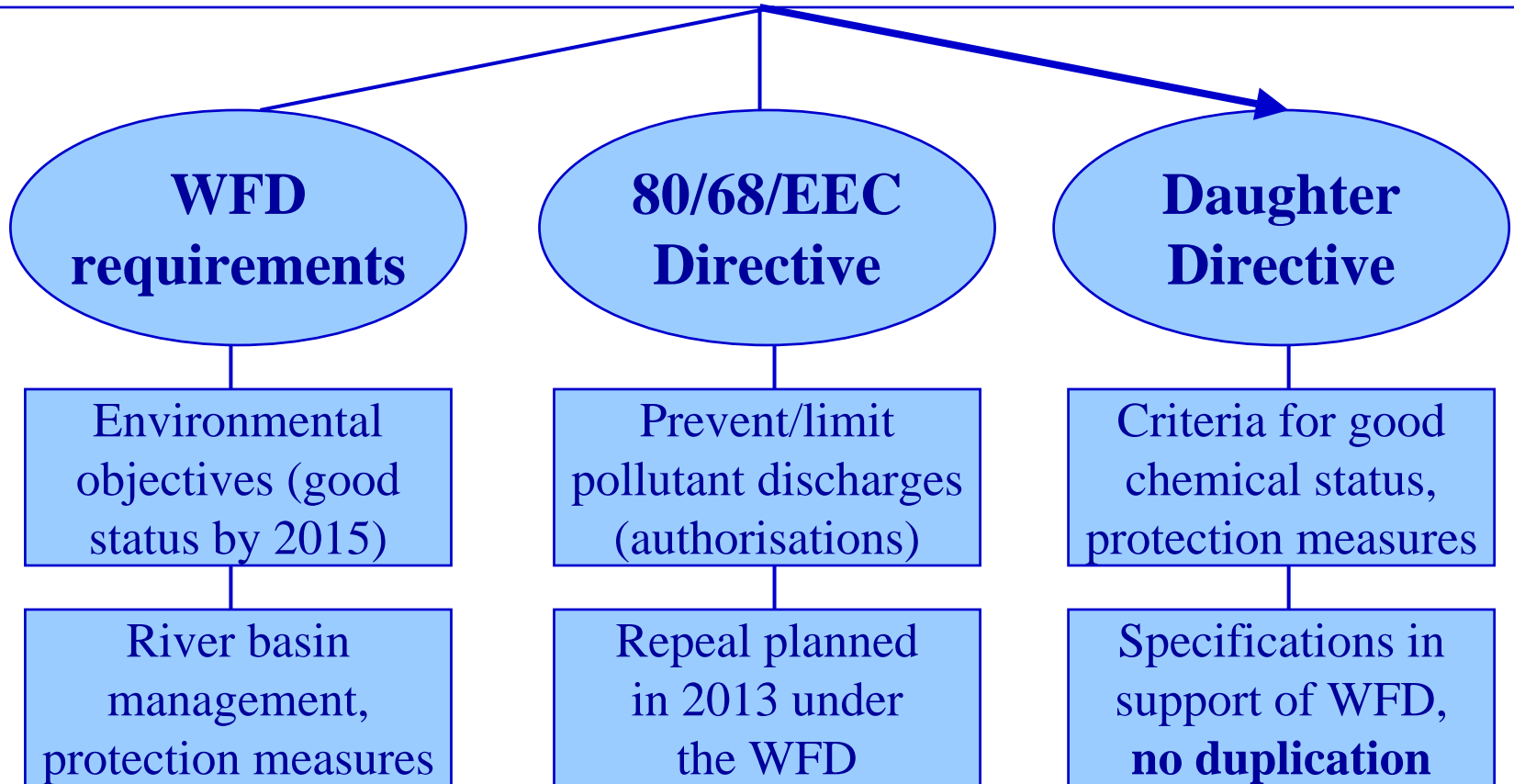
Key requirements of Article 17 WFD

- **Criteria for defining good groundwater chemical status:** taking into account the provisions of Annex V of the WFD
 - **Criteria for identification and reversal of significant and sustained upward trends:** also based on WFD requirements
 - **In absence of criteria:** MS shall establish appropriate criteria (at latest 5 years after entry into force of WFD) - if not: starting point for trend reversal is 75 % of existing EU standards
-



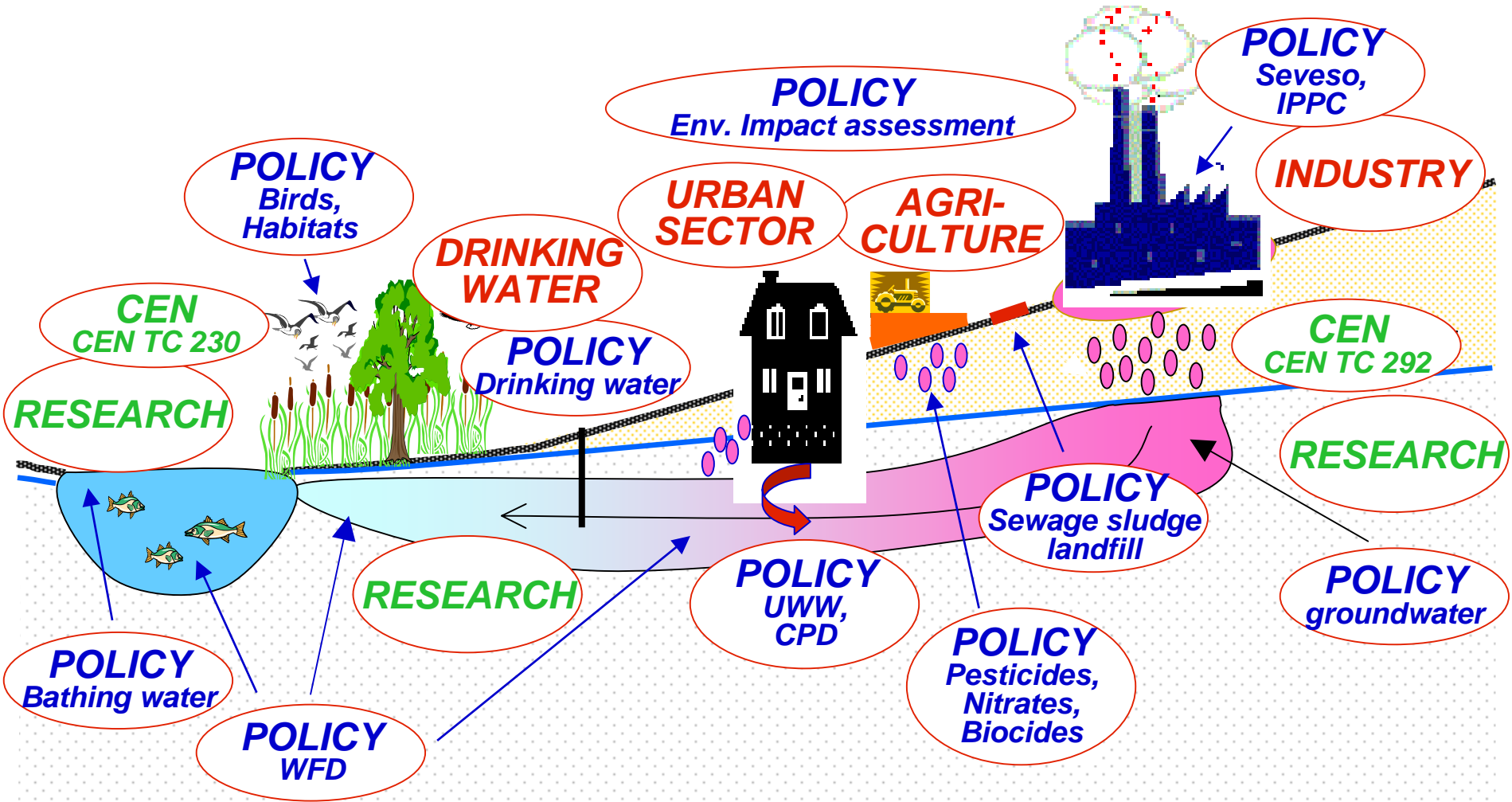
Legislative requirements

GROUNDWATER PROTECTION AGAINST POLLUTION



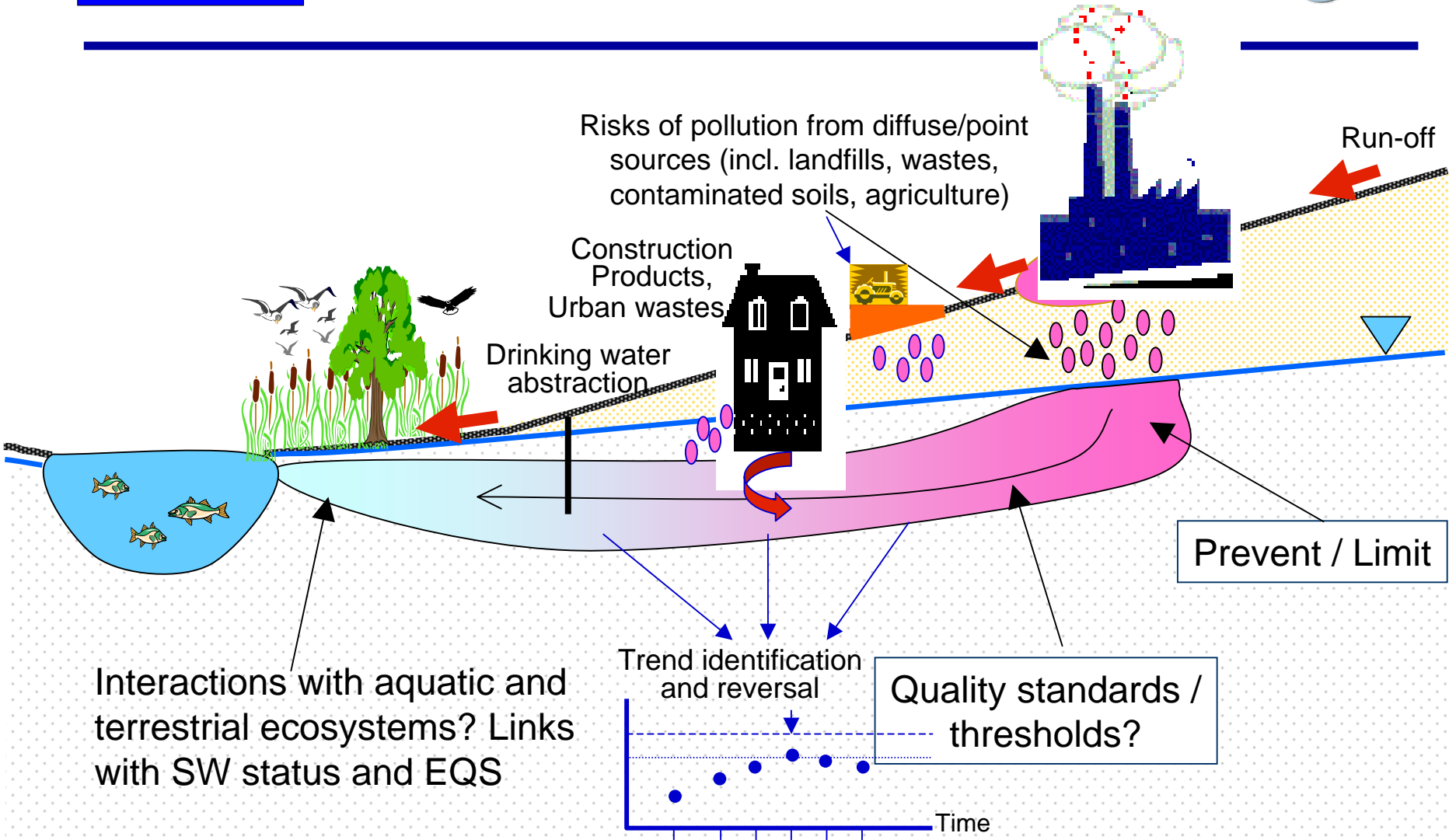


Key features of groundwater protection





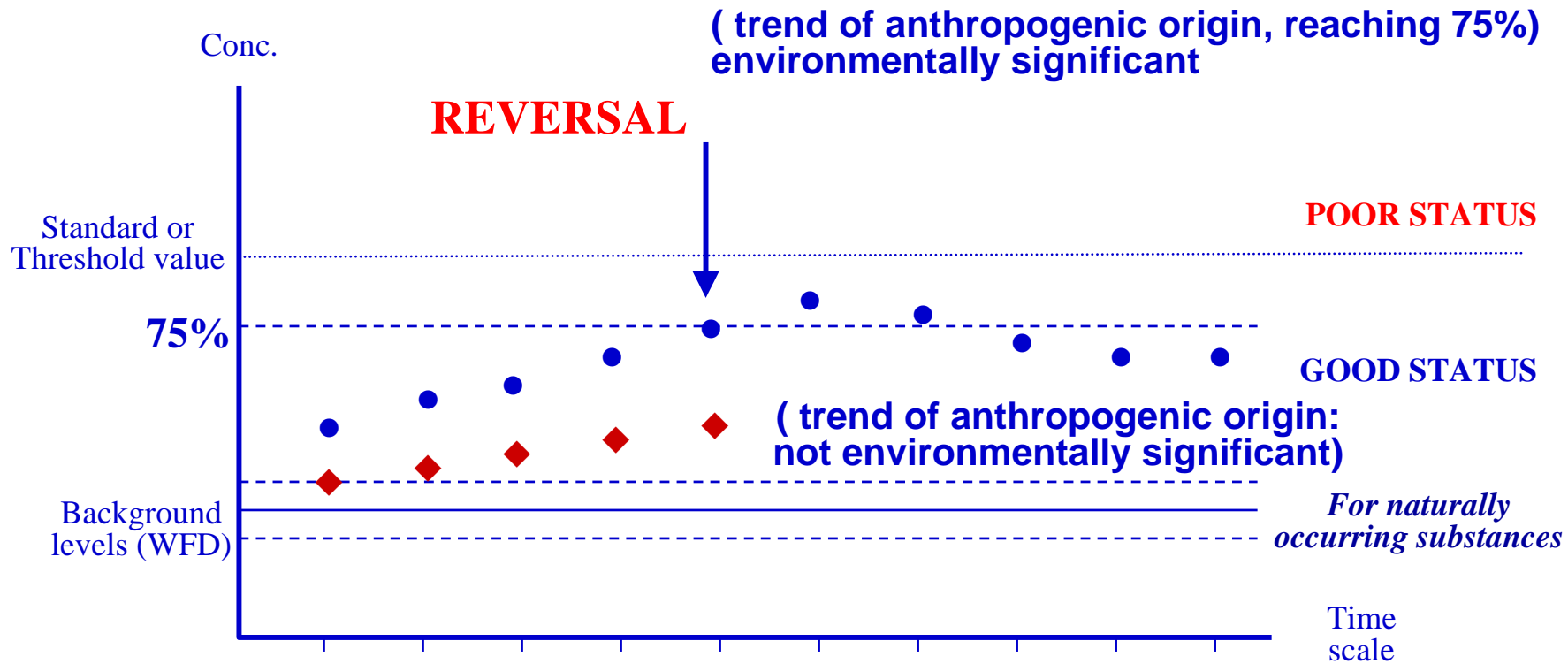
Issues to be addressed





Considerations of trends

TREND REVERSAL

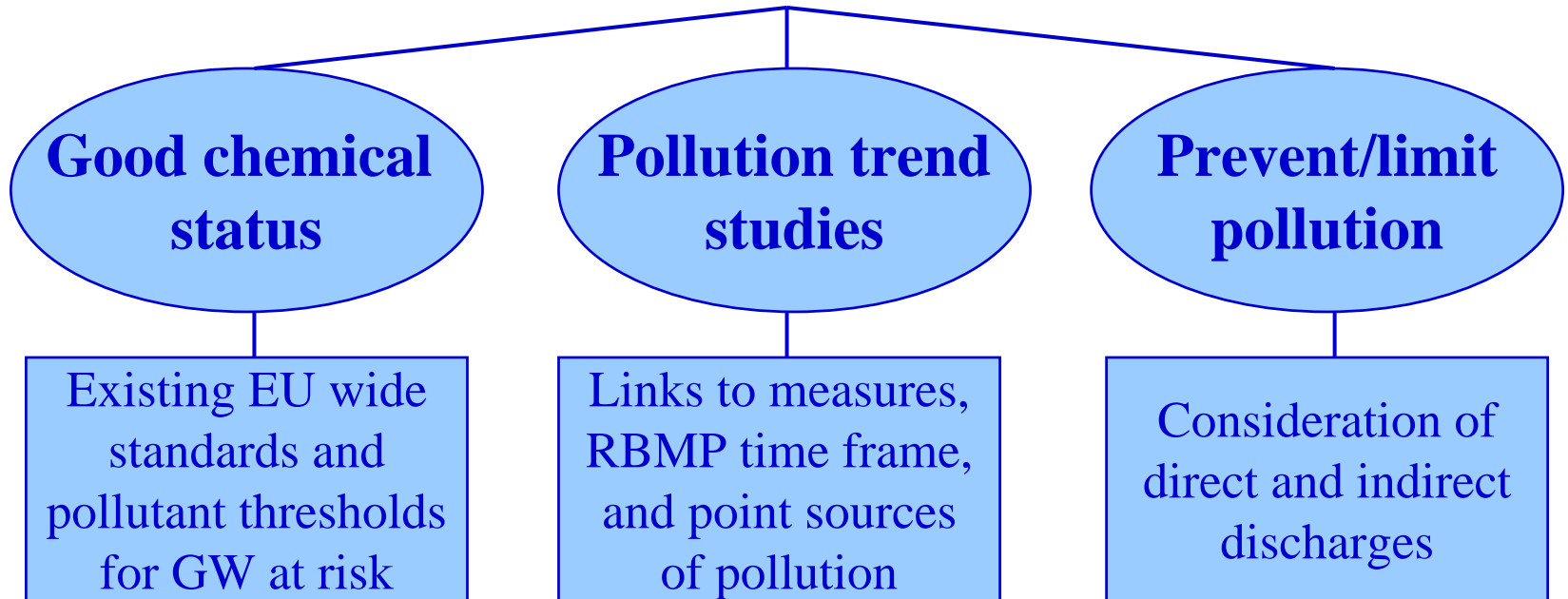




Orientations of the proposal

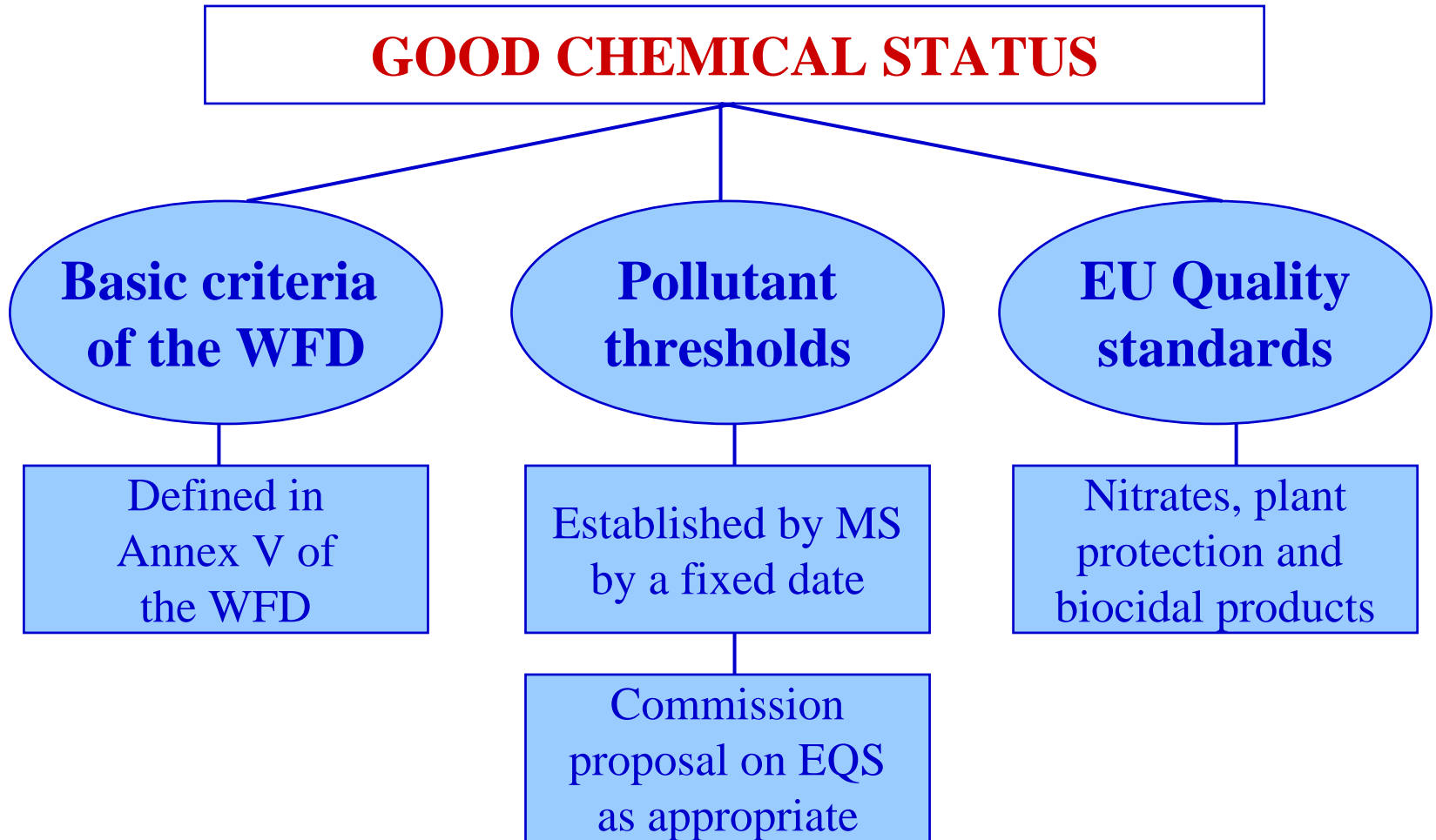
GROUNDWATER DAUGHTER DIRECTIVE (Art. 17 WFD)

PROPOSAL





Orientations of the proposal

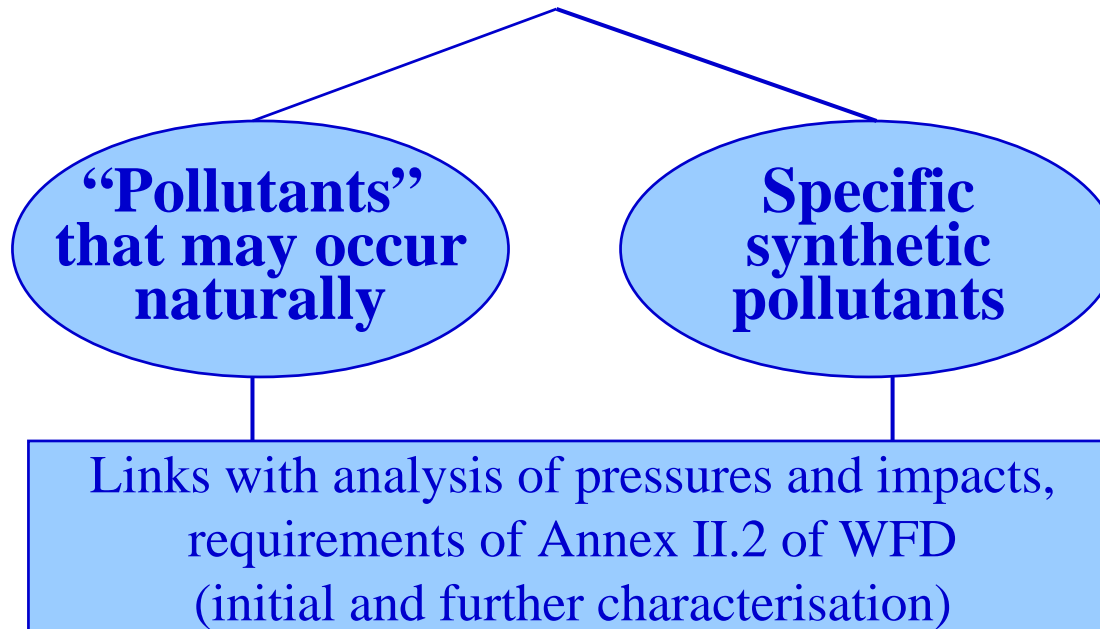




Orientations of the proposal

IDENTIFICATION OF POLLUTANTS

For groundwater bodies that were characterised at being at risk

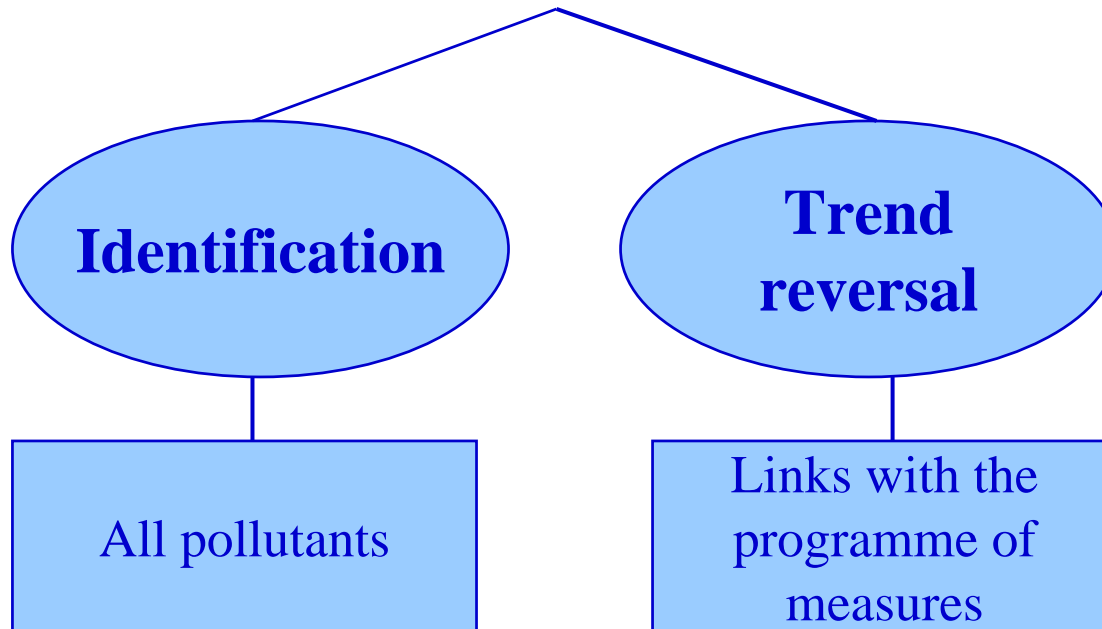




Orientations of the proposal

TREND IDENTIFICATION AND REVERSAL

Any significant and sustained upward pollution trend should be reversed

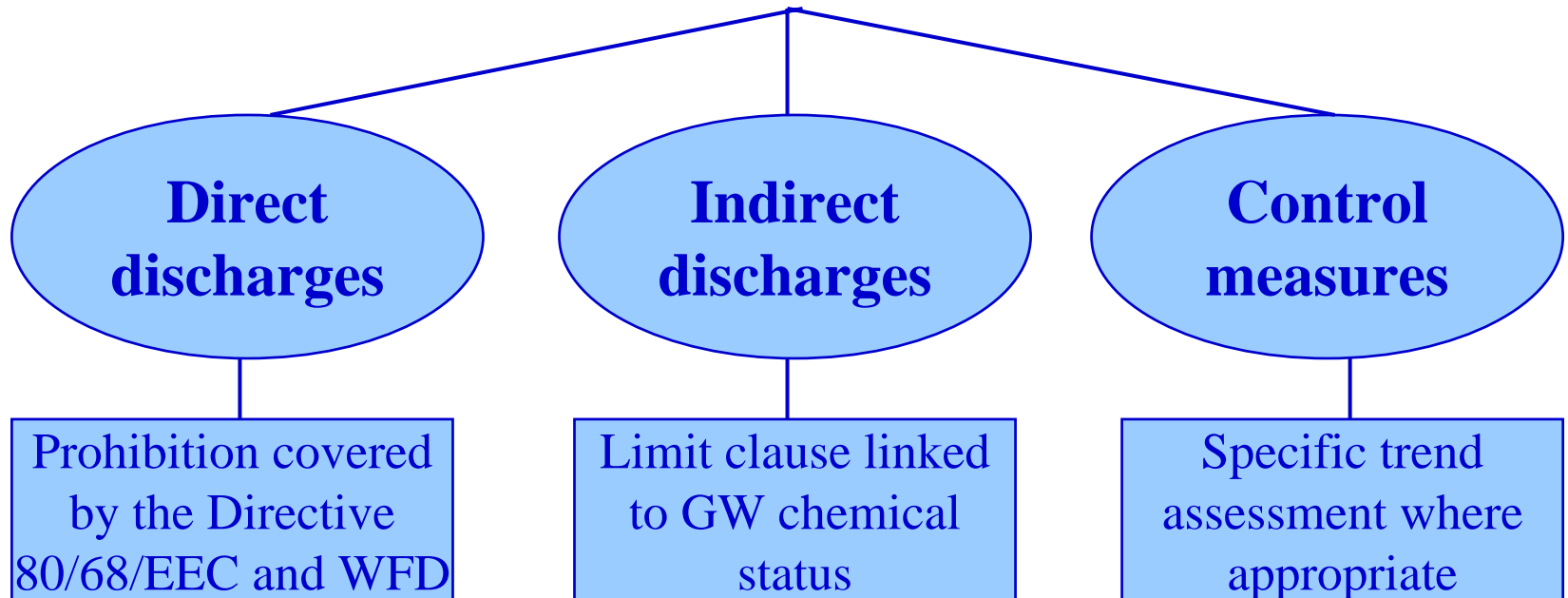




Orientations of the proposal

PREVENTION AND LIMITATION OF POLLUTION

Framework to stop further pollution and reduce existing pollution





Orientations of the proposal

TRANSITIONAL ARRANGEMENTS

Prevent/limit pollution

Continuation of protection regime of Directive 80/68/EEC

Link with Article 11 of WFD

**Investigations,
authorisations
(Art. 5 Dir. 80/68)**

Consideration of
specifications on
good chemical status



Orientations of the proposal

TIMING

Environmental objectives

WFD

2004

Characterisation, pressures and impacts

2005-2006

Economic study / Further characterisation

2007

Monitoring, public participation

2009

River Basin Management Plan

2012

Programme of measures (Article 11 WFD)

GWD

2004

Forum of information and exchanges

2005-2006

Expected adoption/Threshold values

2009

RBMP, transitional arrangements

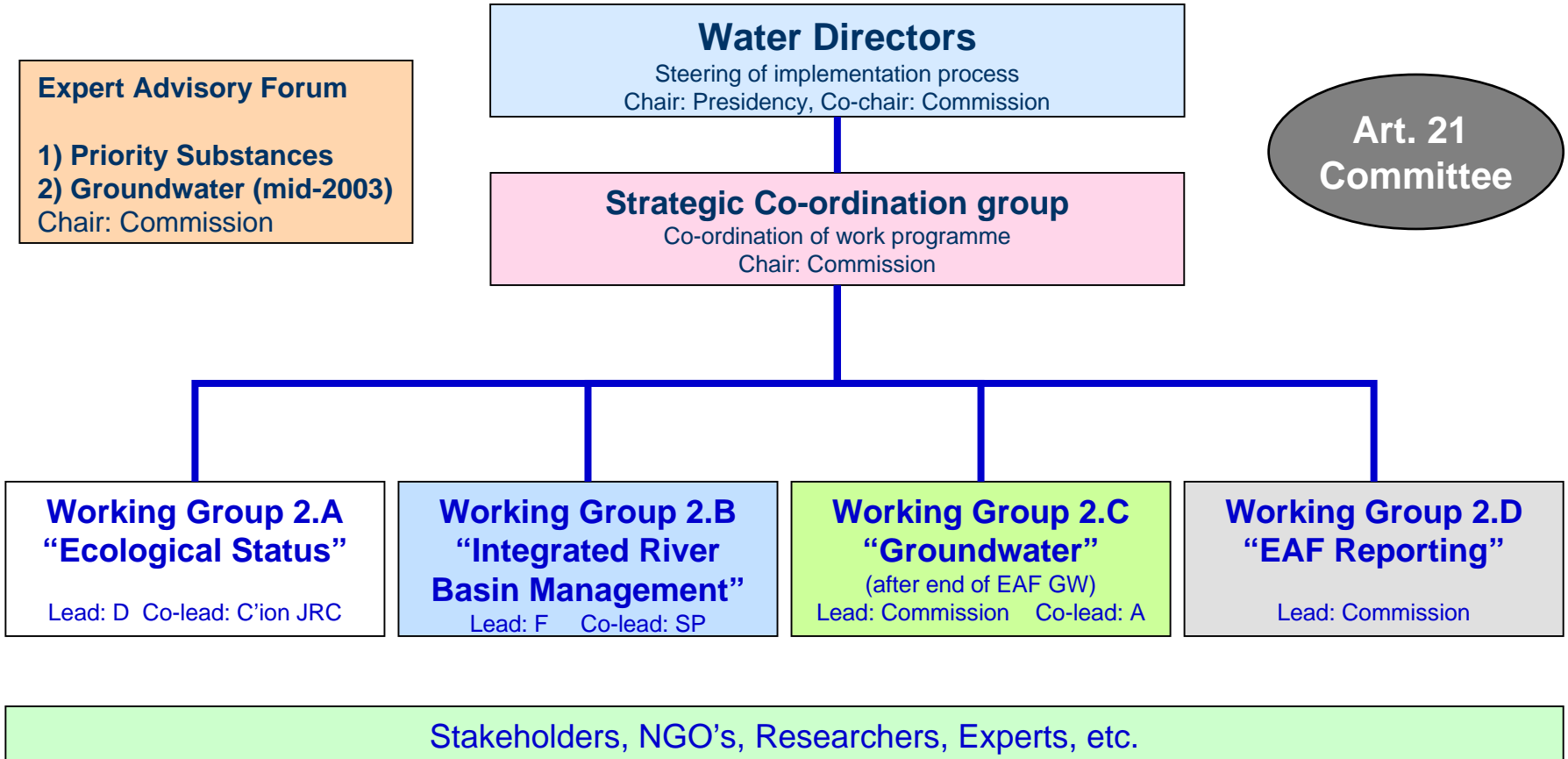


On-going activities

- **Common Implementation Strategy (CIS)** of the WFD: discussion on best practices, including basic knowledge on water bodies
- **Research activities:** topic on „threshold values“ in the 2nd Priority 8 call (deadline: 13 January 2004) – Need for a strengthened co-ordination with on-going and starting projects, e.g. AQUATERRA and SNOWMAN



CIS organisational set-up





Working Group 2C

Organisational set-up

